

Repacking Guide



For DEX® II Commercial

Be sure to include all components of the DEX® II in your return shipment to remain eligible for a complete refund.

If you do not have the original box, contact Teeter Customer Service at 800-847-0143. Repacking instructions show the original packing materials. If you do not have them, please take care to secure and protect all parts when packed to prevent damage and ensure the box is securely taped for transport.

DO NOT disassemble the product into more components than the parts listed below (Figure A).

- | | |
|--------------|------------------------|
| ① Base Frame | ⑤ Leg Support Assembly |
| ② Base Feet | ⑥ Lap Pad Frame |
| ③ Legs | ⑦ Lap Pad |
| ④ Leg Feet | ⑧ Tools Provided |

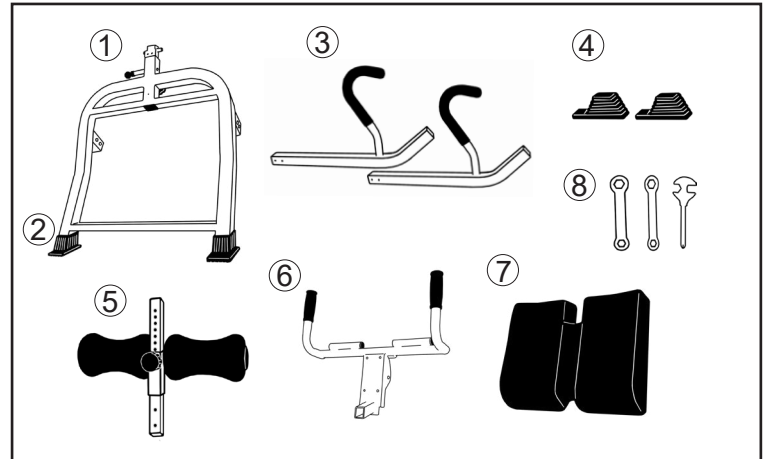


Figure A

① Remove the Leg Support Assembly

Use the Wrench to remove the 2 x Bolts and 2 x Washers from the Leg Support Shaft (Figure B). Slide the Leg Support Assembly out of the Leg Support Shaft.

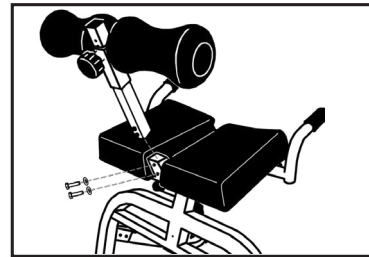


Figure B

② Remove the Lap Pad Assembly

Remove 1 x Hex Bolt and 1 x Washer from the Lap Pad Frame using the Wrench (Figure C).

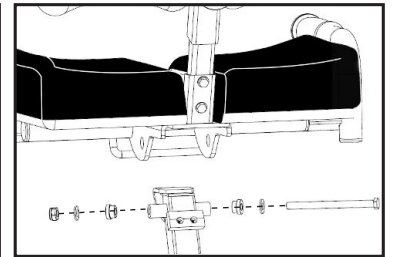


Figure C

③ Remove Lap Pad from Lap Pad Frame

Place the Lap Pad facedown on a flat surface. Remove the 4 x Screws and detach the Lap Pad Frame from the Lap Pad (Figure D).

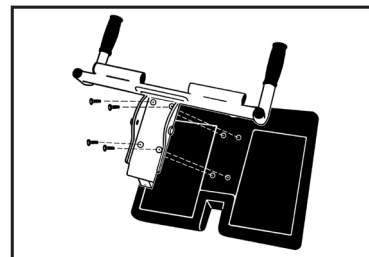


Figure D

④ Remove Legs from Base Frame

Remove the 2 x Bolts, 2 x Flat Washers, 2 x Lock Washers, and 2 x Bolt Caps from each Leg (Figure E).

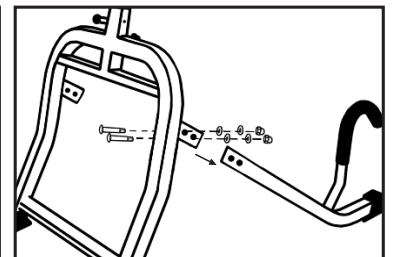


Figure E

⑤ Remove Base Feet and Leg Feet

Slide the Base Feet off the Base Frame and the Leg Feet off the Legs (Figure F & G).

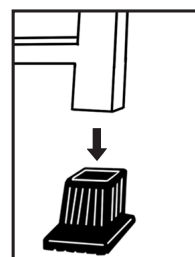


Figure F

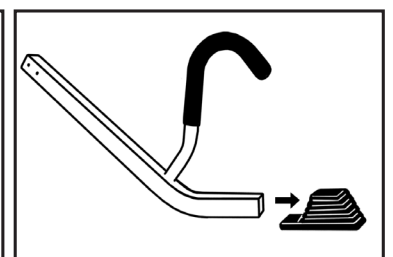


Figure G

Disassembly is complete. Do not break down the components any further. Proceed to repacking instructions.

6 Repacking the Feet and Hardware

Place the Base Feet, Leg Feet, and Hardware into the bottom left corner of the box as shown (Figure H).



Figure H

7 Repacking the Legs

Place both Legs into the box as shown (Figure I).



Figure I

8 Repacking the Leg Support Assembly

Place the Leg Support Assembly into the box as shown. Cover the Legs with flat cardboard before proceeding to the next step (Figure J & K).



Figure J



Figure K

9 Repacking the Lap Pad Assembly

Place the Lap Pad Frame into the box as shown. With the underside of the Lap Pad facing up, place the Lap Pad on top (Figure L & M).



Figure L



Figure M

10 Repacking the Base Frame

Place the Base Frame into the box as show (Figure N).

11 Sealing the Box & Attaching the Label

Seal the large box securely with packing tape, affix the return label and mark your Return Authorization Number (RA #) on the outside panel of the box.

IMPORTANT: The DEX II cannot be returned without a Return Authorization Number. Please contact Teeter Customer Service for assistance.



Figure N



If you have any questions, please contact customer service at

800-847-0143

info@teeter.com



U.S. and Foreign Patents Apply. Teeter and Teeter logo are registered trademarks of Teeter. Specifications subject to change without notice.

© COPYRIGHT 2024 Teeter. International Law Prohibits Any Copying. D12051 0624-0